

## Oakville Elementary School



### MO OES Arrival and Dismissal Procedures

Meagan Ochoa • about 21 hours ago • Monday, Aug 15 at 1:03 PM • Oakville Elementary School

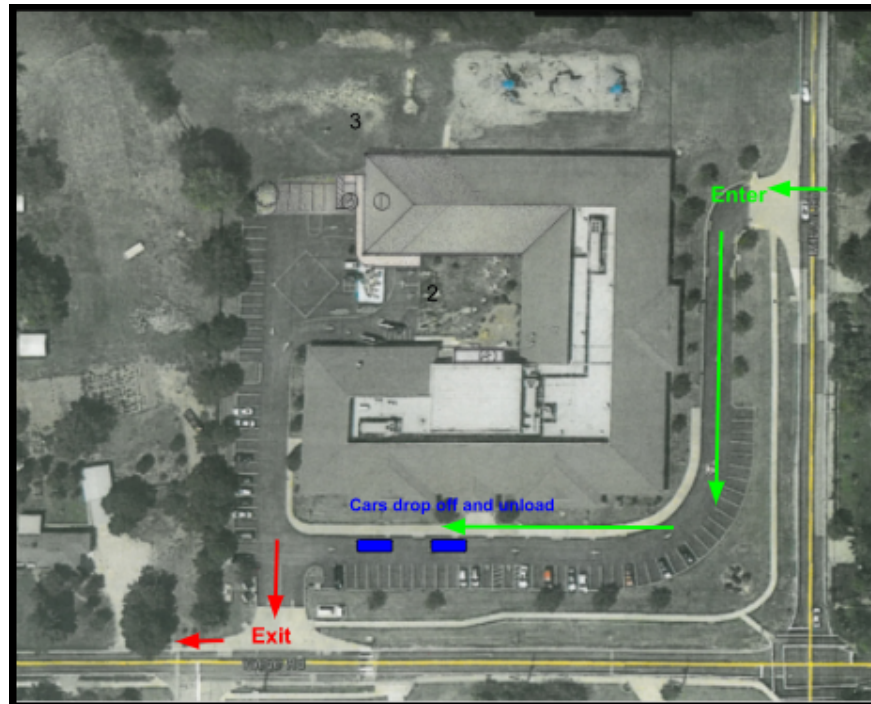
#### 2022-2023 Arrival and Dismissal Procedures

Dear Families,

Oakville Elementary is so grateful to you, the community, for passing Prop S and allowing us to expand our parking lot. With construction continuing into our school year, this will require some changes to our arrival and dismissal procedures. With any change, there are challenges and disruptions. Our number one priority is the safety of our students, families, and staff. Please read the following instructions for parent drop-off and pick-up procedures.

If possible, please have your child ride the bus to and from school. Bus routes have been posted on the website.

#### DROP-OFF



1. Drop-off will begin at 8:10 a.m. while construction continues. Staff members will be here to supervise students. **We strongly advise you to drop off your child prior to 8:30.** Buses will arrive on the lot at this time.
2. Cars will enter through the Milburn entrance in one line. Staff will be directing traffic into the lot.
3. Once you have pulled along the sidewalk, you may drop your child off. Staff will be positioned outside to ensure safety as your child exits the car. Please have them sit behind the passenger's seat so they are exiting on the sidewalk. It is also important for time efficiency that they have all their supplies, lunch, backpack, and water bottles ready to exit.
4. Students will walk along the sidewalk and enter the building through the front doors. **NO ADULTS WILL BE ALLOWED TO EXIT THEIR VEHICLES FOR THE SAFETY OF YOU, OUR STUDENTS, AND OUR STAFF.**
5. Once your child has exited the vehicle please continue moving forward. **Exiting cars will be required to make a right turn on Yaeger.**

#### PARENT PICK-UP



1. **NO CARS WILL BE ALLOWED ONTO THE PARKING LOT UNTIL 3:45 p.m.** after the buses are dismissed. Students will be supervised by our staff as they wait.
2. You are welcome to park in the Oakville High School parking lot until then. **DO NOT PARK ON NEIGHBORHOOD STREETS.** There are signs that say your car may be towed.
3. At 3:45, cars will pull up into the parking lot from the Milburn entrance, into two rows-- Row A closest to the building. Row B is closest to the sidewalk.
4. There will be staff stationed at the 6 cones for the safety of the students. When the vehicle is parked in front of a cone (on either Row A or Row B) we will load students in the car.
5. When all cars in front of the cones are loaded, a staff member will dismiss the cars **to exit right onto Yaeger Rd.** The car lines will continue moving forward.
6. This system will continue until all cars are loaded and all students are dismissed.

We realize this system will take some time to perfect. Please expect arrival and dismissal to take an extended amount of time, especially the first several weeks. Again, our top priority is the safety of all our students, staff, and you. There are some things you can do to help with efficiency:

1. Consider using the Mehlville Bus to transport your students to and from school if at all possible.
2. Share these directions with anyone who may drop off or pick up your child during the school year.
3. Have your child seated behind the passenger seat with all of their belongings ready to exit quickly.
4. Drop your student off early between 8:10-8:30. If you need to pick up your child early, you must pick them up before 3:00 p.m.
5. Be patient and kind to our staff members directing traffic, loading, and unloading students.

Thank you again for your patience and flexibility as we navigate a new system. We are excited to welcome all of our Lions back to OES!

Sincerely,

Meagan Ochoa  
Oakville Elementary Principal

**Comments & Replies**